



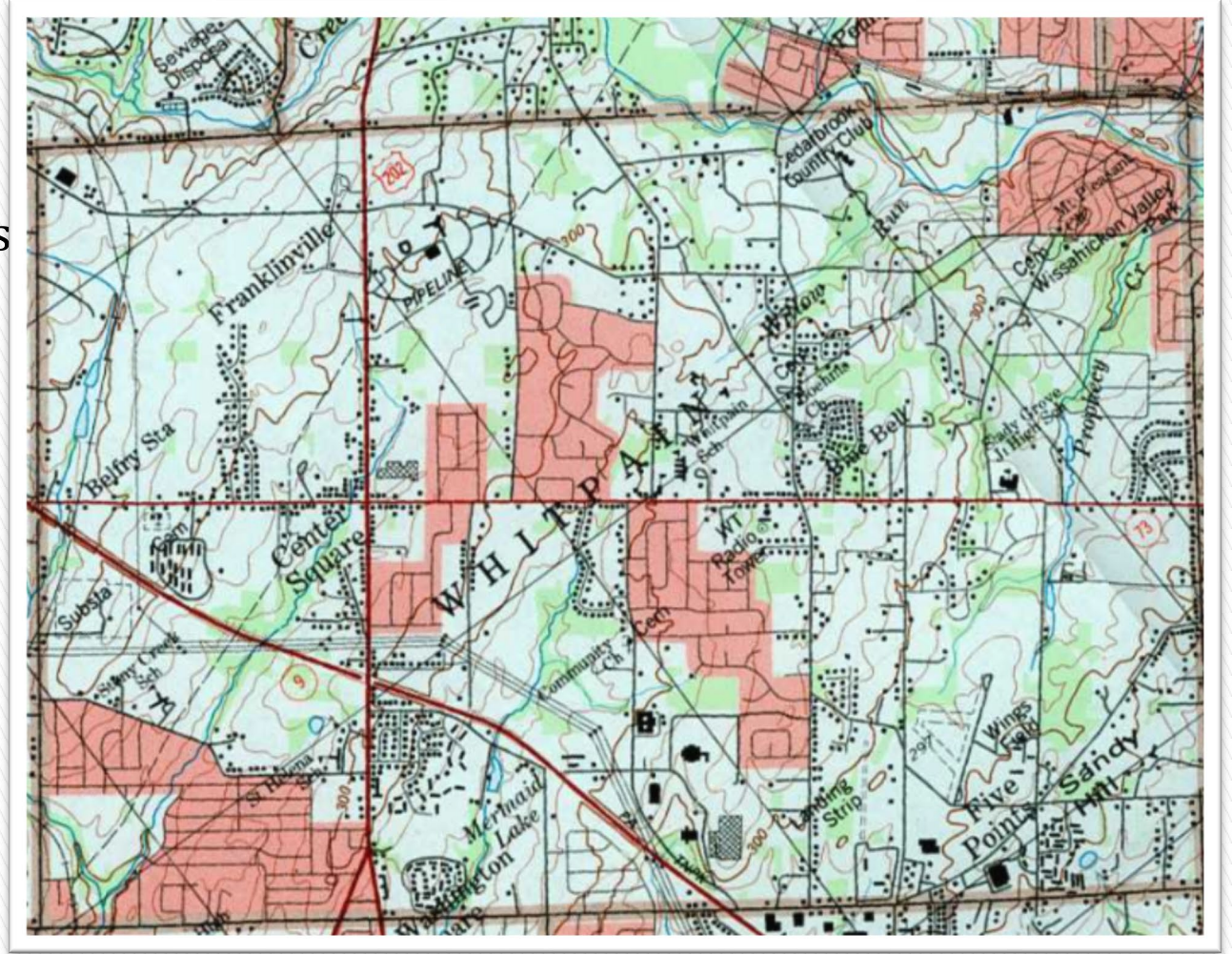
Traffic Task Force Public Meeting

April 25, 2019

Whitpain Township

Tonight's Road Map

- Introductions
- Mission Statement
- Traffic Task Force
- Township vs. County & State Roadways
- Township Responsibilities
- Legal Framework
- Traffic Enforcement
- Completed Projects
- 202 Widening
- Planned Projects
- Improving Walkability & Bikeability
- Frequently Asked Questions
- Questions from Audience
- Breakout Sessions



Introductions

Board of Supervisors

Fred Conner

Adam Zucker

Tony Greco

Ken Wollman

Michele Minnick

Township Staff Members

Roman Pronczak, Manager

Dave Mrochko, Asst. Mgr.

William Armstrong, Lt. WPD

Jim Blanch, Twp. Engineer

Tom Farzetta, Dir. Of PW

Greg Klucharich, Asst. Engineer

Carolyn Ellison, Eng. Inspector

Traffic Consultants

Casey Moore, McMahon

Anton Kuhner, McMahon

Planning Commission

Rick Shorin

Mission



The mission of Whitpain Township Government is to efficiently, responsibly, and creatively provide the essential services that build value, enhance quality of life, and protect the health, safety, and rights for all who live in, work in, and enjoy Whitpain.



Vision

Whitpain Township is a community that embraces the future while cherishing our heritage. We will continue to be recognized for our diversity, fiscal responsibility, and leadership in resource conservation. We shall never waver in our commitment to ensuring public safety and enhancing the quality of life of all of our fellow citizens.



Values

- ✓ **Integrity** - We follow moral and ethical principles as we conduct our work. We are consistent in our deeds, methods, and expectations.
- ✓ **Stewardship** - We value our natural, financial, and human resources and are diligent in protecting, preserving, and enhancing Whitpain Township.
- ✓ **Responsiveness** - We respond quickly but thoughtfully to individuals, situations, and events.
- ✓ **Respect** - We treat everyone with respect. Our actions and words will demonstrate consideration and appreciation of others.
- ✓ **Partnership** - We establish transparent, long-term relationships that are based on clarity, trust, shared goals, and open communication with organizations that are committed to improving Whitpain Township.

Traffic Task Force

- Created in 2016
- Comprehensive analysis of traffic issues, complaints, and projects
- Brings together members of the Police, Engineering, Administration, and Public Works departments, elected and appointed Township Officials, and traffic engineers

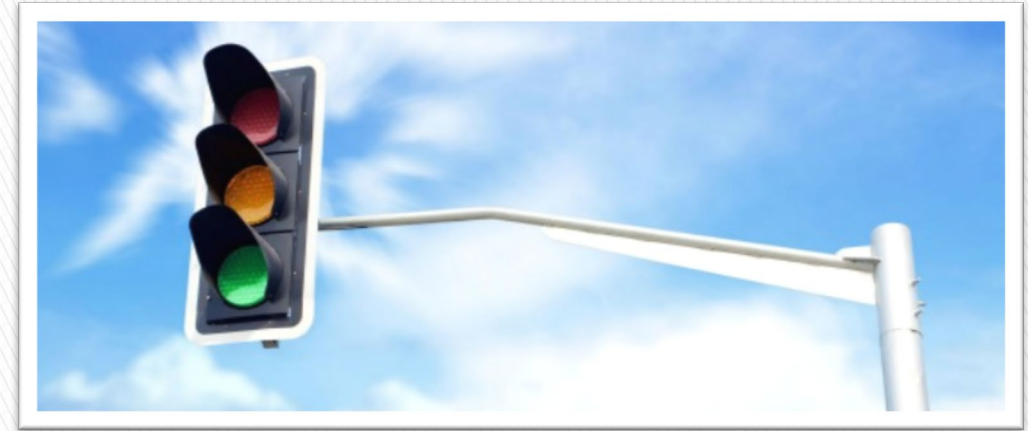
TRAFFIC TASK FORCE MEMBERS	
Roman Pronczak	Bill Armstrong
David Mrochko	Joe Fenerty
Jim Blanch	George Frost
Greg Klucharich	Mike McGuire
Carolyn Ellison	Rick Shorin
Tom Farzetta	Nicole Leininger
Lee Miller	Casey Moore
Mike Monastero	Anton Kuhner

Examining Problems & Finding Solutions

- Examining the root causes of traffic issues is a complex process and finding solutions to these problems is equally challenging.

Considerations include:

- Traffic Signals
 - Is a new signal needed?
 - Is an existing signal operating efficiently?
- Roadway Capacity
- Motorist Safety
 - Sight Distance
 - Speeding
 - Failure to follow posted signs
- Pedestrian Safety
- Pass Through Traffic vs. Local Traffic
- Proper Land Planning
 - Inability to Control Development Outside of Whitpain



Township vs. County & State Roadways vs. Private Roadways

- The Township is responsible for nearly 70 miles of roads, but not every road
- Maintenance includes resurfacing and repairing roads, snow plowing, bridges, and stormwater maintenance
- Traffic signal ownership and maintenance for ALL signals
- However, a web of county, state and private roadways are weaved into our road network



Other Roadways

State Roads

DeKalb Pike
 Skippack Pike
 Morris Road
 Norristown Road
 Penllyn BB PK (73 to Stenton)
 School Road
 Swede Road
 Stenton Avenue
 Township Line Rd. – (S)
 Walton Road
 Plymouth (N. of Morris)

Private Roads

Deer Hollow
 Red Fox Farm
 Blue Bell Springs
 Addison Reserve
 Amberly
 Village of Oxford
 Whitpain Farms
 Whitpain Hills
 Windermere
 Yorkshires

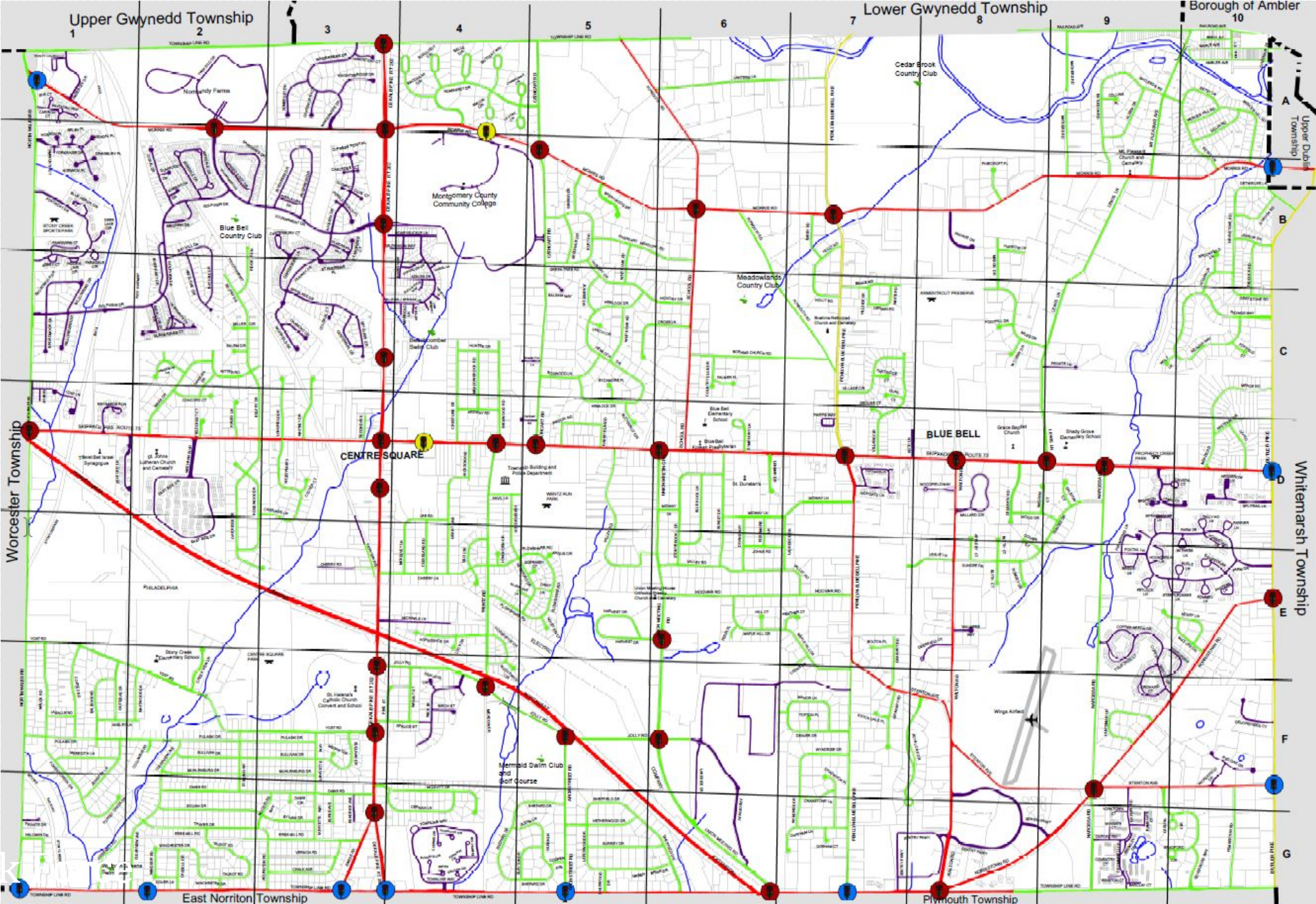
Private Roads

BB Country Club
 BB Woods
 Deer Lake
 Meadowick
 Normandy Farms Estates
 Pheasant Meadow
 Foxcroft
 Steeplechase
 Townline

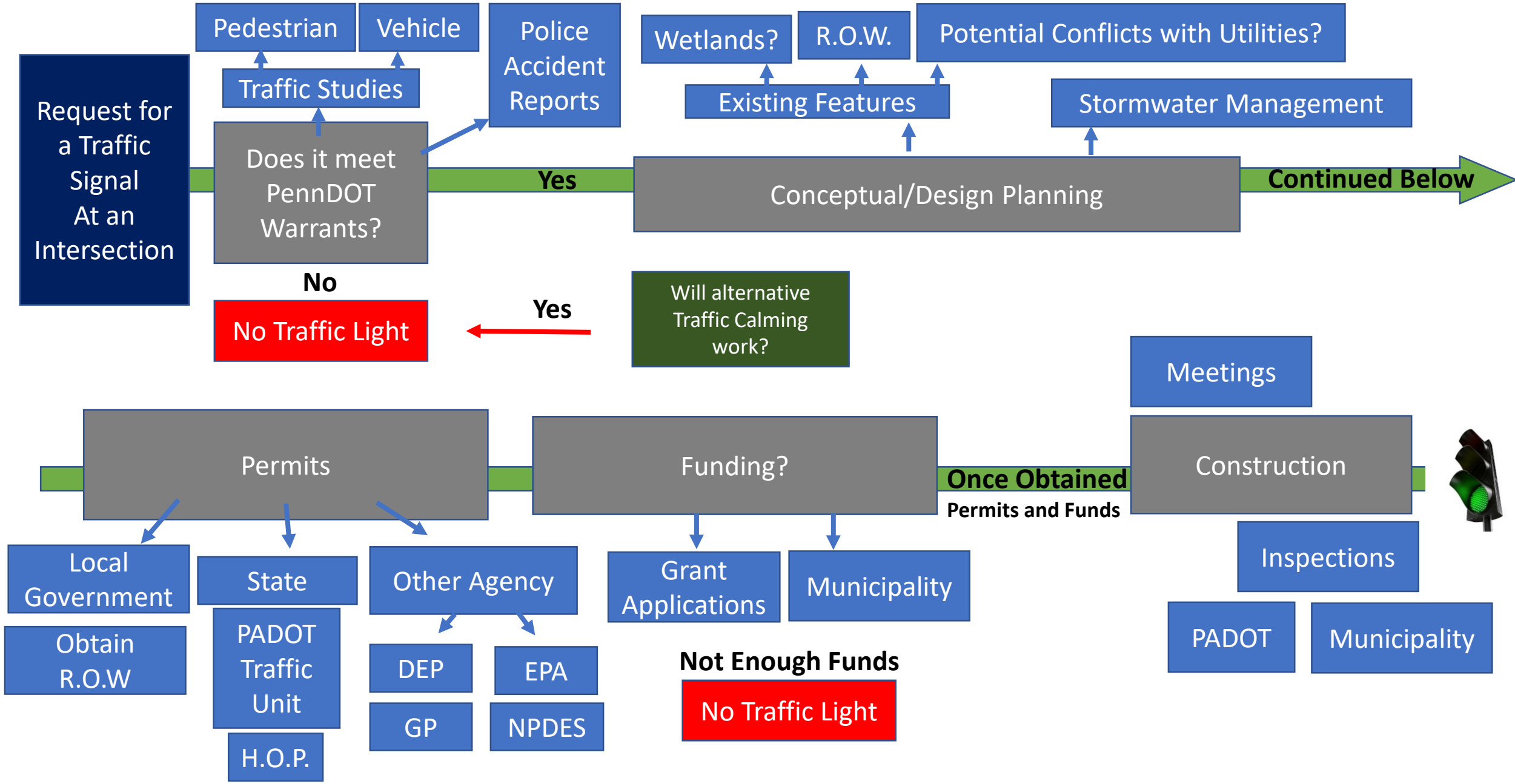
County Roads

Butler Pike
 Penllyn BB PK (73 to L.G. Twp.)

Map of Traffic Signals in Whitpain



Process to Add a Traffic Signal



Governing Regulations



FHWA Manual on Uniform Traffic Control Devices (MUTCD)



PennDOT Publication 212 – Official Traffic Control Devices



PennDOT Publication 46 – Traffic Engineering Studies



PennDOT Publication 383 – Traffic Calming



PennDOT Publication 149 – Traffic Signals



Publications establish criteria for installation of traffic signals, signage, pavement markings, speed limits, restrictions, etc.



Understanding Regulations

- All traffic control devices, including stop signs must meet warrants before installation and can not be installed to reduce speed.
- All traffic signals MUST be approved by PennDOT and must work in compliance with a PennDOT issued permit.
- Speed Limits must be established under strict PennDOT guidelines.
- Additionally, strict regulations govern the installation of speed bumps.

Warrants are synonymous with standards or criteria



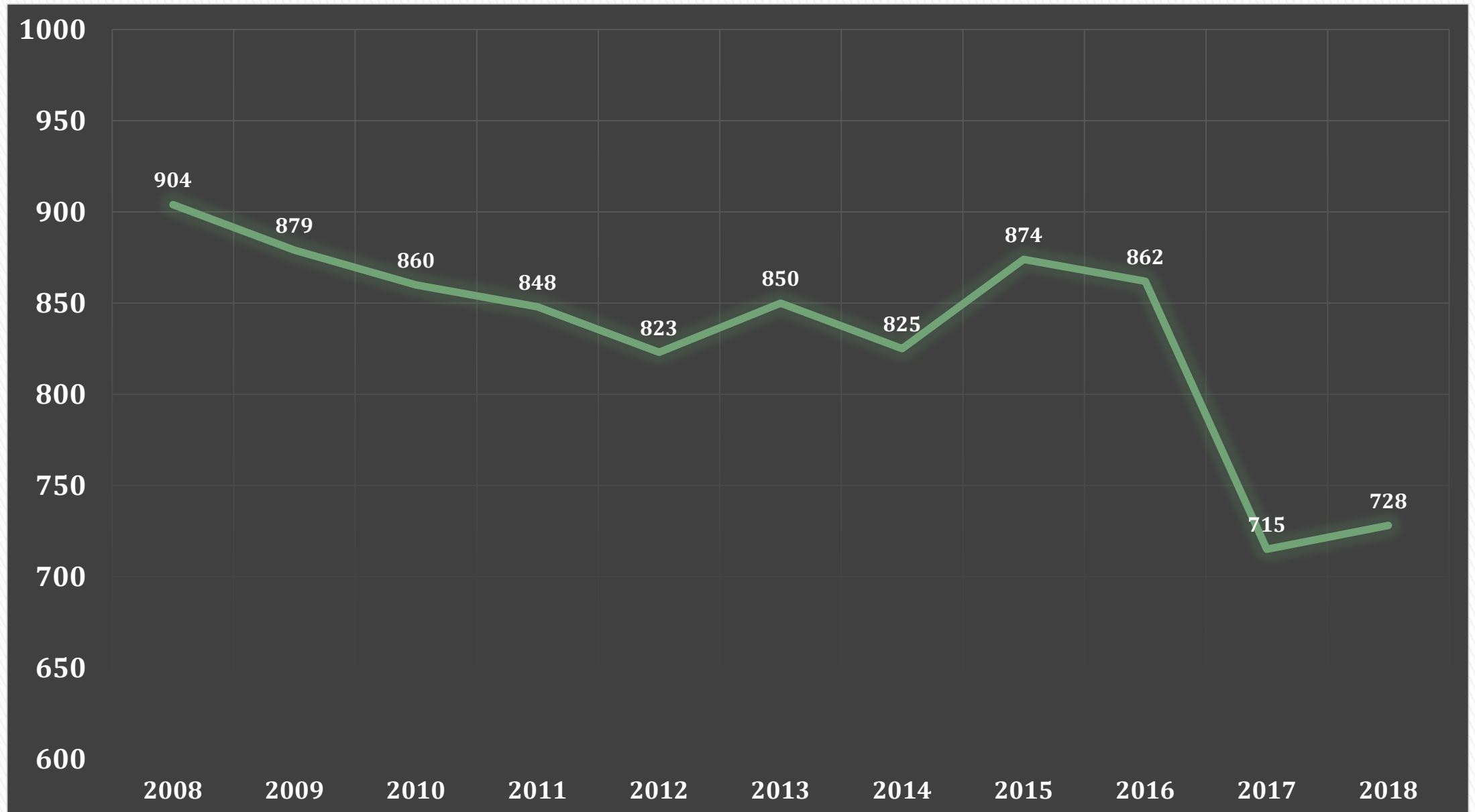
Police Enforcement

- With capacity issues on roadways in Whitpain, motorists are seeking to avoid delays by cutting through residential neighborhoods. While we are planning and waiting for capacity improvements to help alleviate these issues, the Whitpain Police Department is actively enforcing traffic laws.
 - Targeted Enforcement
 - Speed Studies
 - Analysis of safety conditions
 - Response to accidents

	Traffic Citations	Warnings	Crashes	TOTAL
2018	2,595	675	728	3,998



Eleven Year Crash Survey



Completed Projects

➤ Intersection Improvements

- Realignment & signalization of Cathcart Rd @ Morris Rd – 2004
- Turning lane additions to Morris Rd and Penllyn BB Pk – 2009
- Improvements and signalization to the intersection of Narcissa Rd and Rt. 73 – 2010
- N. Wales and Morris Realignment – 2013
- North Wales & 73 intersection improvements – 2015
- Butler Pk SB right turn lane @ Rt. 73 – 2018

➤ Traffic Signals

- Norristown Rd and Butler Pk – 1997
- Normandy Farm Estates Drive & Morris Rd – 1998
- Rt. 73 and Lewis Ln – 1998
- Wentz and Jolly Roads – 2001
- Skippack Pk & Cathcart Rd – 2001
- Arch St and Jolly Rd – 2001
- Rt. 202 @ Wawa and Centre Sq. Commons – 2017



Butler & Skippack Improvements

BEFORE



AFTER



N. Wales & Skippack Improvements

BEFORE



AFTER



Narcissa & Skippack Improvements

BEFORE



AFTER



Mt. Pleasant Pedestrian Improvements

BEFORE



AFTER



202 Widening

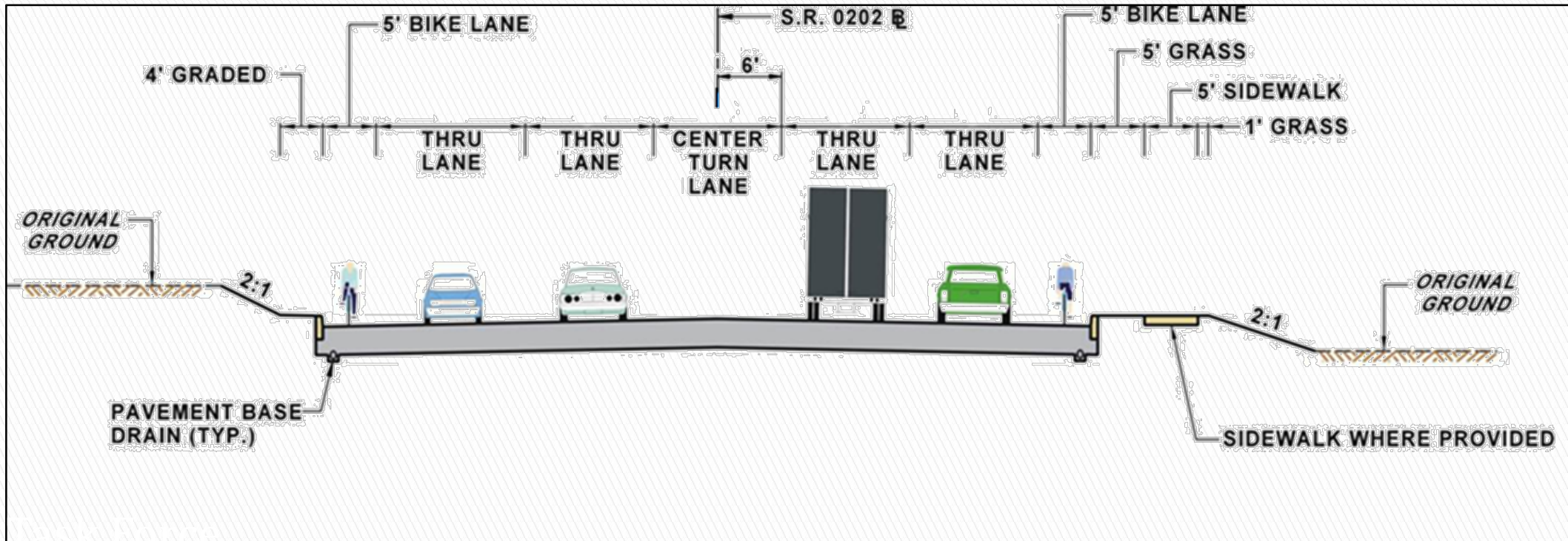
- Widening of Route 202 has begun
- Improve the stretch of Route 202 between Township Line Road (East Norriton/Whitpain border) & Tournament Drive (The most congested intersection in the Township is at 202 & 73)



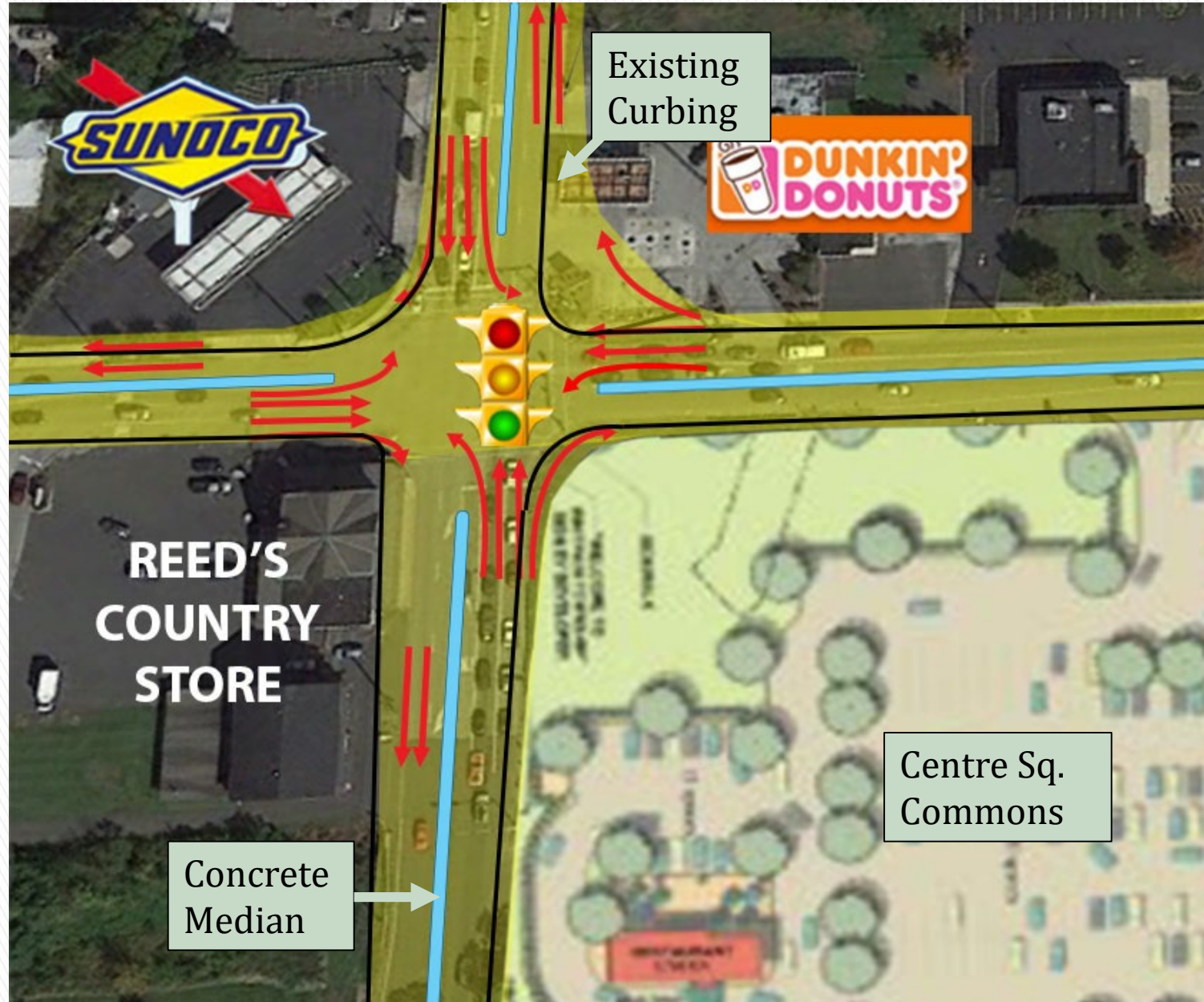
- “Offline” improvements started in 2018
- “Offline” Improvements:
 - Twp. Line & N. Wales
 - Twp. Line & Arch
- “Mainline” improvements have begun with utility work
- No official detour as PennDOT can only detour to other major state roads

202 Widening Details

- Expected to take years to complete
- Will create:
 - 5 lanes of curbed roadway (2 northbound, 2 southbound, and a turning lane in the center of the roadway)
 - 5' bike lane/shoulder
 - Sidewalks for pedestrian access (at least one side)
- Turning lanes at key intersections including 202 & 73



202 at Skippack Pike Widening



Planned Projects

Signal and/or pedestrian crossing improvements awarded and soon underway:

- 5-Points Signal and Pedestrian Improvements
- 6-Points Signal and Pedestrian Improvements
- Narcissa Rd. and BB Woods Pedestrian Crossing
- Union Meeting Pedestrian Crossing (near Aetna)
- Skippack Pike and Penllyn BB Pike signal upgrade
- Signal upgrades at Skippack Pike:
 - Walton Rd
 - Union Meeting Rd.
 - Lewis Ln
 - Cathcart Rd
 - Narcissa Rd



Planned Projects (Continued)

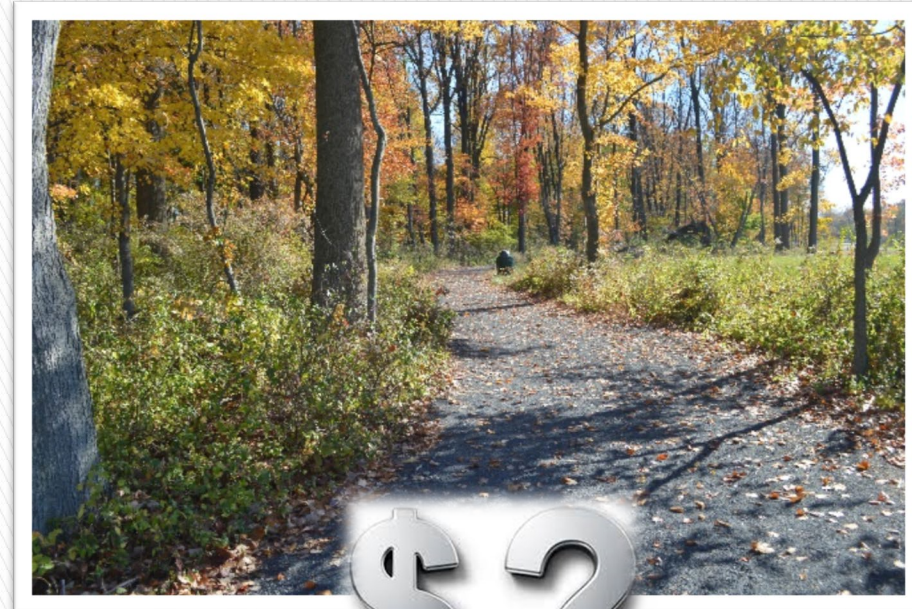
Other improvements awarded or soon to be in progress:

- New traffic signal at MC3 and Morris Road
- Skippack Pike EB right turn lane restriping at Union Mtg. Road
- Pulaski Drive Bridge
- Yost Road Bridge
- Traffic Signal at Centre Sq. Commons & McCaffrey's/Kohl's



How Does the Township Pay for All of This?

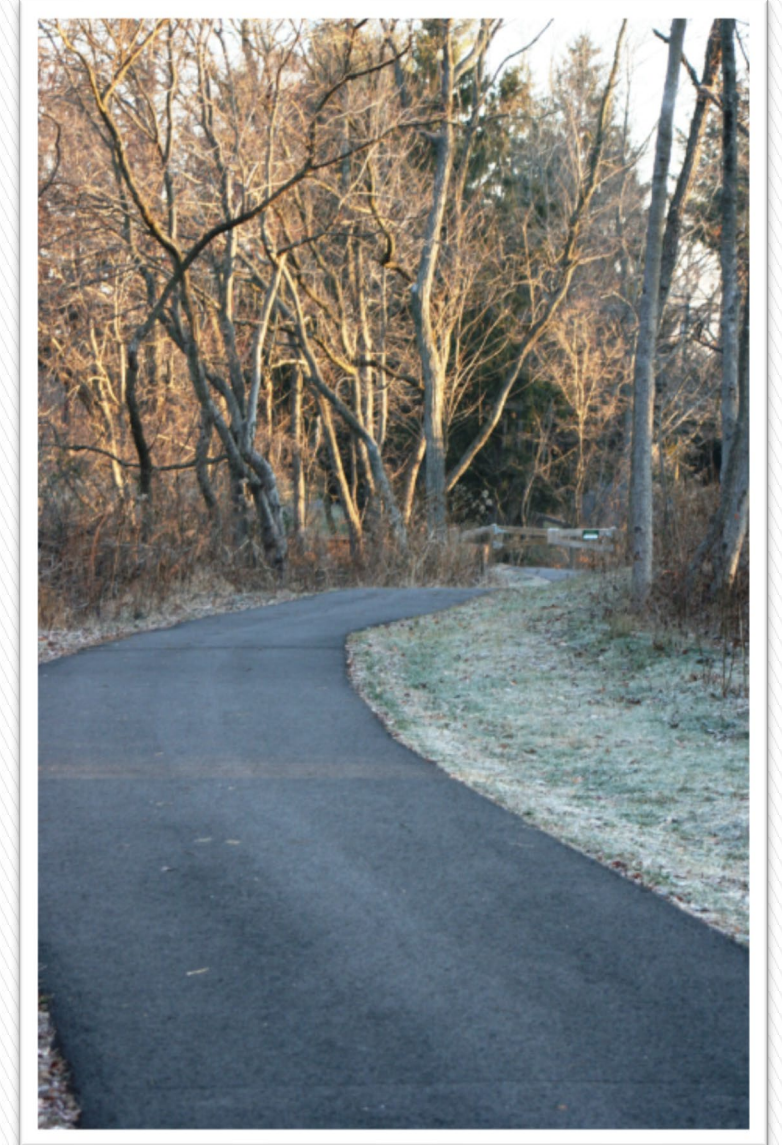
- There are a few main sources of revenue for traffic improvement projects:
 - State Funding through Grants
 - Act 209 Traffic Impact Fees Paid by Developers
 - Township General Fund
- Physical traffic improvements are expensive:
 - Pulaski Drive = \$2.1 Million
 - Yost Road Bridge = \$1.4 Million
 - Butler Pike Turn Lane & Signal Upgrade = \$418,000
 - Traffic signals may cost \$250K - \$500K



Bikeability, Walkability & Trails

Focusing on traffic is important, but we need to look at any and all possible ways to reduce traffic:

- Walkability Study In Progress
- Bike MontCo



Frequently Asked Questions



- Speeding and cut-through traffic
- Warrants for traffic signals (BB Springs)
- Left turn arrows for traffic signals
- 5-Points and 6-Points
- Timing of traffic signals
- School, Skippack, and Union Meeting Intersection
- Penllyn BB and Skippack intersection



Comments & Questions

Whitpain Township